

# DBS Student Accommodation Guide

2021 / 2022

## Table of Contents

<b>Introduction</b> .....	2
<b>Accommodation Options</b> .....	3
Student Residences .....	3
Landlords .....	4
Homestay (not available for April and September 2021 intake).....	4
Short Term – Hostels .....	4
<b>Prevent Fraud</b> .....	5
<b>Renting Guidelines</b> .....	6
2. Decide on a budget.....	6
3. View before paying.....	6
4. Check that everything is working .....	6
5. Sign a rental agreement .....	7
6. Get a receipt for any payments made.....	7
7. Make a list of furniture and appliances with the landlord.....	7
8. Know when the deposit and rent are due.....	7
9. Know your tenant rights and responsibilities.....	7
10. Getting to and from DBS .....	7
<b>*Please Note</b> .....	8

## Introduction

Welcome to the DBS Accommodation Guide. Choosing the right place to stay while you are studying in Dublin can be a daunting challenge, especially when you are unfamiliar with the city. This guide has been produced by the DBS Student Experience Team to help you with your search.

This guide covers:

- The types of accommodation available in Dublin City
- Where to look for accommodation
- Guidelines for renting in Dublin
- Tenant and landlord rights and responsibilities

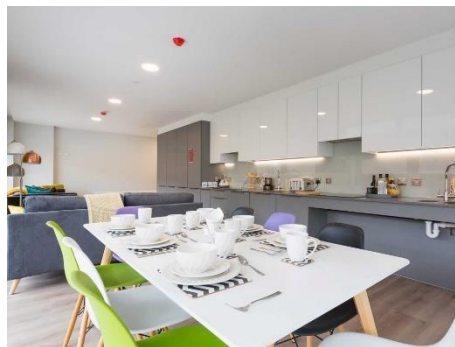


### NOTE:

**>> Please be cautious when renting accommodation from private landlords - do NOT pay deposit or rent without viewing the property in person first. Our Student Experience Team will help to advise you if you suspect an accommodation source is fraudulent or suspicious.**

For further information and advice please mail *The Student Experience Team* who will assist you with any questions or queries.

We look forward to welcoming you to DBS and hope you enjoy your time in our 'Fair City'!



## Accommodation Options:

### Student Residences

DBS have a number of single rooms at The Brickworks, Dublin, which meet the current COVID-19 self-restriction requirements as set out by the Irish Department of Further and Higher Education, and The Department of Health. If you travelling (incl. transit) from one of the countries listed as high risk in Ireland, please contact [student.services@dbb.ie](mailto:student.services@dbb.ie)

Brickworks is located in the Heart of The Liberties, one of Dublin's most historic neighbourhoods, known for traditional pubs, weekend markets and tourist attractions. It is a 20 minute walk to the DBS campus.

Each room is en-suite, with plenty of storage space and room for study. The shared kitchens and living spaces are fully equipped and ready to move into. The campus also includes a gym, cinema, roof top terrace, communal areas, and study spaces.

Own ensuite room with study space and ample storage. Shared fully fitted kitchen and living space. All utilities included in the price. WIFI included in the price

2-week, 4-week, semester and linear accommodation available.

Guaranteed option to extend your room for up to 12 months once initial 2/4 week period is over.

[Please CLICK HERE to book a room!](#)

## Landlords

This is the most common form of renting in Dublin. You can either rent a whole property or a single room. Please exercise caution and inspect the property personally before paying any deposit.

The following is a list of online databases with houses or rooms to rent:

- <https://www.hostingpower.ie>
- <http://www.daft.ie>
- <http://www.myhome.ie>
- <http://www.collegecribs.ie>
- <http://www.homes.usi.ie>
- <http://www.airbnb.ie>

## Homestay (not available for April and September 2021 intake)

Due to the current Covid-19 restrictions Homestay is not available for April 2021 and September 2021 intake.

## Short Term – Hostels

Due to Covid-19 restrictions some Hostels may not be open and this could change over the next few months.

- Kinlay House: <https://kinlaydublin.ie/>
- Barnacles Temple Bar: <https://barnacles-temple-bar-house-hotel-dublin.hotel-ds.com/en/>
- Abbey Court: <https://www.abbey-court.com/>
- Four Courts Hostel: <http://www.fourcourtshostel.com/>

## Prevent Fraud

Take care and be vigilant when scouting for accommodation – there have been reported incidences of fraud and attempted fraud on students in Dublin. Be extra cautious with advertisements on social media; it is preferable to use registered and recommended sites as listed above.

### Prevent Fraud – The DOs and DON'Ts:



- Personally view all properties, accompanied by a friend
- Check keys and locks with the landlord Be sure that all banks/online companies are legitimate
- Use a credit card for payments if possible
- Contact a member of our Student Services Team to help advise you if you fear a place looks suspicious
- Alert the Irish Police (Gardaí) on:  
00 353 1 666 9063

- Make any payments without physically viewing the property
- Make any payments if the bank account given is not an Irish Bank Account
- Use Facebook to source accommodation

## Renting Guidelines

Regardless of what type of accommodation you choose – whether it be a house, apartment or home share – the following guidelines will ensure you don't fall prey to dodgy landlords and help you secure a safe home.

### 1. Location, Location, Location!

It would be ideal to land your dream accommodation in central Dublin. However, Dublin's leafy suburbs are wonderful, vibrant places; well-serviced by public transport to the City Centre via Dublin Bus, Dart and Luas. Review maps of Dublin and cross reference them with Dublin Transport link maps to identify 'Plan B' areas for your search.

### 2. Decide on a budget

Before starting your search; set your budget for how much you are willing to spend on accommodation each month. Students living closer to the College (Dublin 2) will pay more in rent for the convenience. However, Dublin suburbs are well-connected via public transport with most areas within 30 minutes of the City Centre. Generally speaking; the further out you go - the more you get for your money!

### 3. View before paying

When renting from a private landlord *never* pay any money up front before visiting the property in person. Book a viewing and inspect the property with a careful eye. Bring a friend if you feel more comfortable. Scan the area – is it safe? Are there shops nearby? Is it well-serviced by transport?

### 4. Check that everything is working

Prospective tenants should test that doors and windows open and close/lock securely. Check for adequate lighting, ventilation and heating in all rooms of the house, and turn on appliances to check that they work properly e.g. cookers, shower etc.



### 5. Sign a rental agreement

It is highly recommended that you receive a written lease and a rent book to record your rental payments. Always read and understand the Rental Agreement before signing; if in doubt about any of the clauses in the contract seek advice before signing.

### 6. Get a receipt for any payments made

Use online banking for all transactions whenever possible. This includes deposit and advanced rent payments.

### 7. Make a list of furniture and appliances with the landlord

Damage or loss of property is a regular reason for losing a deposit. Take an inventory of everything in the accommodation and its condition before you move in to avoid any disputes with the landlord when moving out. If necessary, take photographs (with the date stamp on) of the property and ask the landlord to counter-sign them.

### 8. Know when the deposit and rent are due

Generally, rents in Dublin are paid monthly and in advance - not in arrears. Most landlords will also require a security deposit (usually the equivalent of one month's rent) to be paid before you move in. This deposit should be returned to you when you leave the property.

### 9. Know your tenant rights and responsibilities

Both tenants and landlords have legal rights and responsibilities. These legal rights come from general landlord/tenant law as well as from any written or verbal tenancy agreement between both. For further information please visit: <http://www.threshold.ie/> Please read this guide to securely searching online databases <http://www.daft.ie/safety-online>

### 10. Getting to and from DBS

Journey time will depend on your accommodation's location. On average, it takes students about 45-60 minutes by bus, tram or train from the suburbs to the city centre. Brickworks Student Accommodation is a 20 minute walk to the DBS campus. Please familiarise yourself with your route to DBS.

[www.dublinbus.ie](http://www.dublinbus.ie)

[www.luas.ie](http://www.luas.ie)

[www.irishrail.ie](http://www.irishrail.ie)







[Good Luck with your home search!](#)

**\*Please Note**

In the absence of any legal or binding agreement between Accommodation owners/advertisers and DBS, the College cannot be held liable for any accommodation, contacts, contracts, introductions and/or arrangements arising from the use of this Guide. The selection of accommodation and terms of the agreement or contract are entirely a matter between the individual students and the external provider.

DBS welcomes all feedback from students and prospective students.

If you have any questions please contact us through [student.services@dbs.ie](mailto:student.services@dbs.ie)